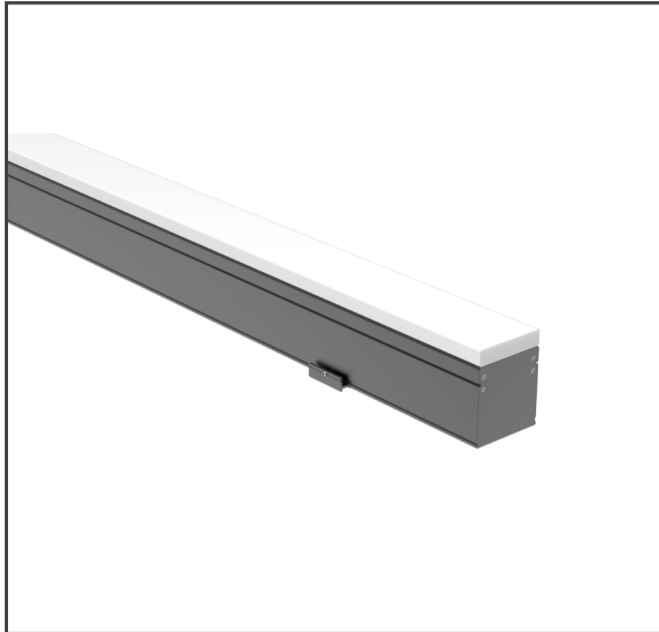


**Code**

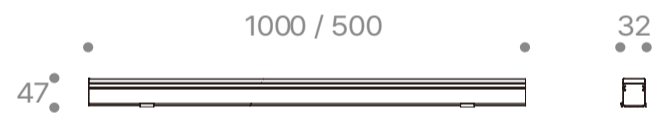
E1108-15S30Z100 / E1108-07S30Z050

**Technical data**



LED Source	SMD
Luminous Flux (lm)	1262 / 631(3000K)
Power (W)	15 / 7.5
Luminous efficiency (lm/W)	84
Beam angle (°)	120
Color Temperature (K)	3000, 4000, 5700
CRI	≥80
Installation	Floor, Wall, Ceiling
Dimension (mm)	30 x 47 x 1000 / 500
Housing	Diecast & Extruded aluminium body, Stainless steel screws, Silicone seal gaskets
Diffuser	Acrylic
Reflector	-
Optic	-
IP rating	65
Finish Color	Dark gray powdercoat finish
Electrical Data	DC 24V
Control	ON / OFF
Certification	-

**Drawing**



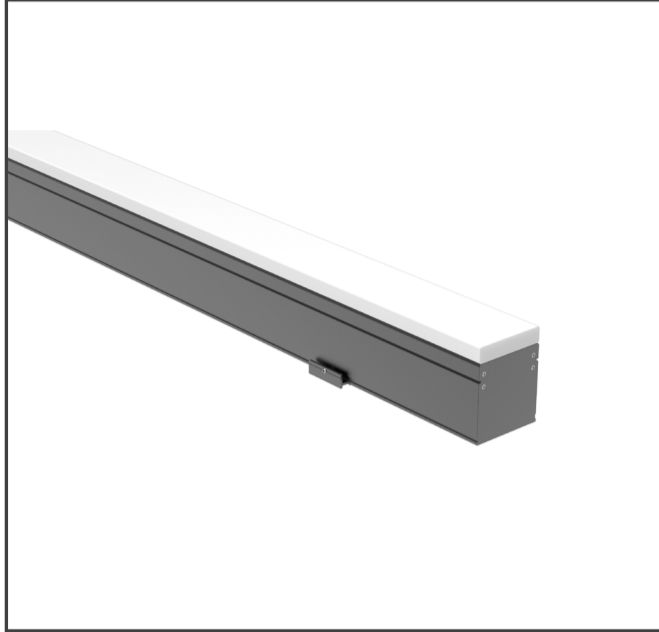
**Photometric Data**

Condition	-
-----------	---

**Code**

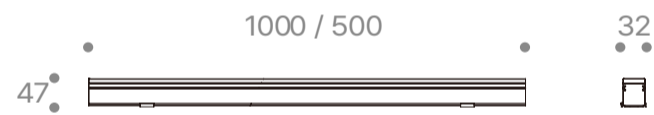
E1108-15SRZ100 / E1108-07SRZ050

**Technical data**



LED Source	SMD
Luminous Flux (lm)	-
Power (W)	15 / 7.5
Luminous efficiency (lm/W)	-
Beam angle (°)	120
Color Temperature (K)	RGB
CRI	-
Installation	Floor, Wall, Ceiling
Dimension (mm)	30 x 47 x 1000 / 500
Housing	Diecast & Extruded aluminium body, Stainless steel screws, Silicone seal gaskets
Diffuser	Acrylic
Reflector	-
Optic	-
IP rating	65
Finish Color	Dark gray powdercoat finish
Electrical Data	DC 24V
Control	ON / OFF or DMX
Certification	-

**Drawing**



**Photometric Data**

Condition	-
-----------	---