

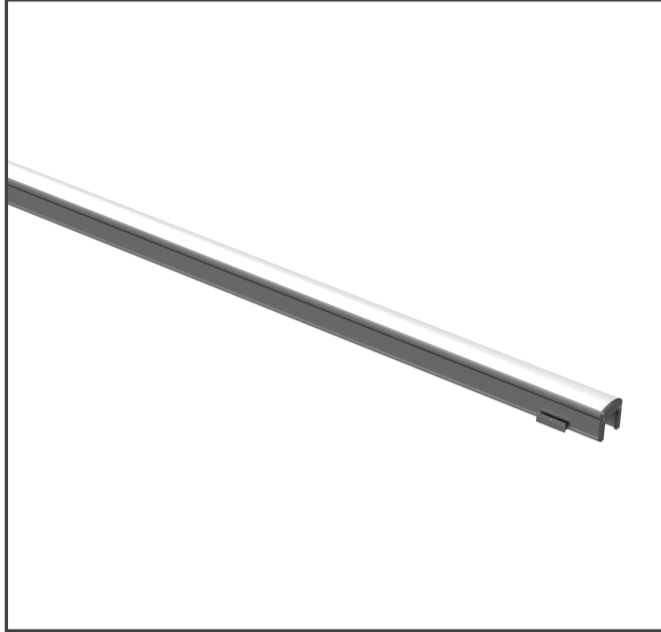
Kailux

Last Update : 2023 . 08

Code

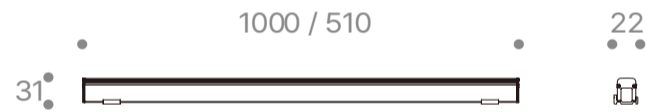
E1107-15S30Z100 / E1107-07S30Z050

Technical data

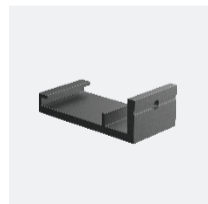


| | |
|----------------------------|--|
| LED Source | SMD |
| Luminous Flux (lm) | 1120 / 560(3000K) |
| Power (W) | 15 / 7.5 |
| Luminous efficiency (lm/W) | 74 |
| Beam angle (°) | 120 |
| Color Temperature (K) | 3000, 4000, 5700 |
| CRI | ≥80 |
| Installation | Floor, Wall, Ceiling |
| Dimension (mm) | 22 x 31 x 1000 / 510 |
| Housing | Diecast & Extruded aluminium body, Stainless steel screws, Silicone seal gaskets |
| Diffuser | Polycarbonate |
| Reflector | - |
| Optic | - |
| IP rating | 65 |
| Finish Color | Dark gray powdercoat finish |
| Electrical Data | DC 24V |
| Control | ON / OFF |
| Certification | - |

Drawing



Accessory



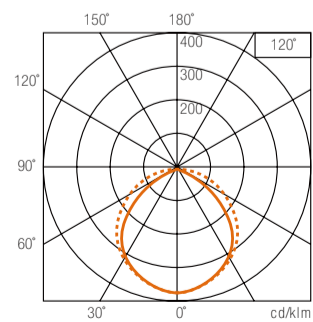
Clip



Bracket

Photometric Data

| | |
|-----------|----------------------|
| Condition | 15W . 3000K . 1120lm |
|-----------|----------------------|



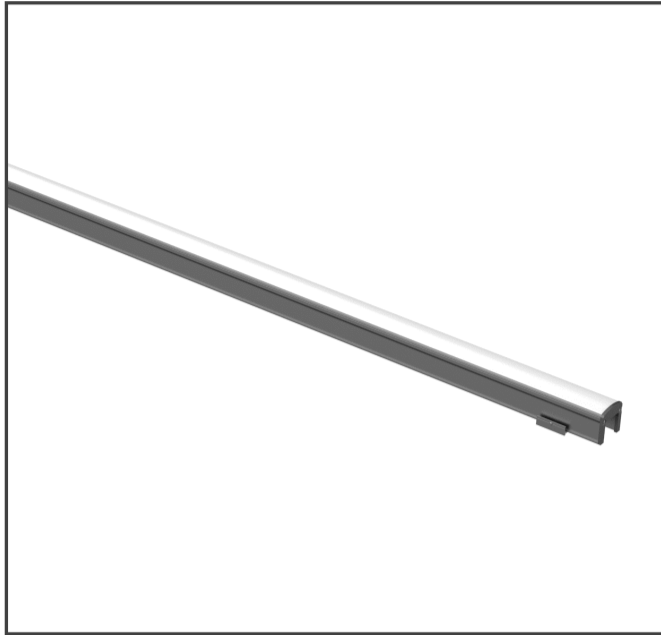
E1107 / E1107-1

— C0C180 C90C270

Code

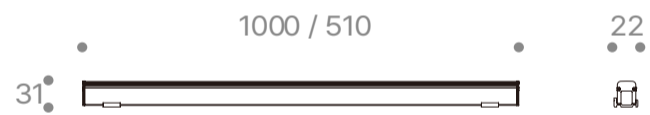
E1107-15SRZ100 / E1107-07SRZ050

Technical data

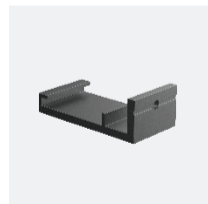


| | |
|----------------------------|--|
| LED Source | SMD |
| Luminous Flux (lm) | - |
| Power (W) | 15 / 7.5 |
| Luminous efficiency (lm/W) | -- |
| Beam angle (°) | 120 |
| Color Temperature (K) | RGB |
| CRI | - |
| Installation | Floor, Wall, Ceiling |
| Dimension (mm) | 22 x 31 x 1000 / 510 |
| Housing | Diecast & Extruded aluminium body, Stainless steel screws, Silicone seal gaskets |
| Diffuser | Polycarbonate |
| Reflector | - |
| Optic | - |
| IP rating | 65 |
| Finish Color | Dark gray powdercoat finish |
| Electrical Data | DC 24V |
| Control | ON / OFF or DMX |
| Certification | - |

Drawing



Accessory



Clip



Bracket

Photometric Data

| | |
|-----------|---|
| Condition | - |
|-----------|---|