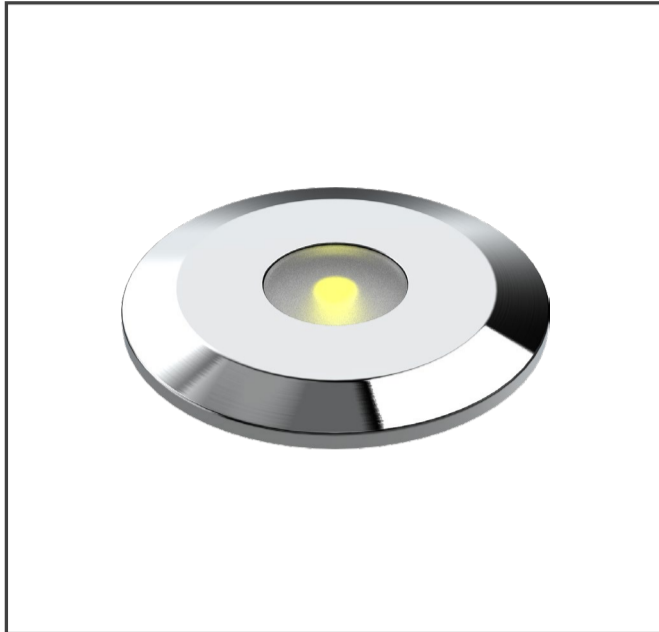


Code

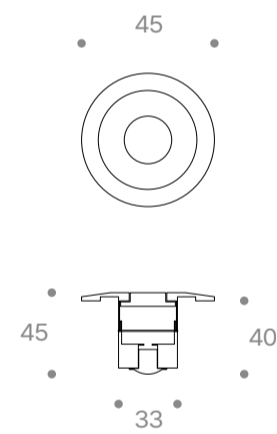
E0901-01S30Z000 / E0901-01S40Z000 / E0901-01S57Z000 / E0901-01SRZ000

Technical data



LED Source	SMD
Luminous Flux (lm)	27(3000K)
Power (W)	1
Luminous efficiency (lm/W)	27
Beam angle (°)	-
Color Temperature (K)	3000 / 4000 / 5700 / RGB
CRI	≥80
Installation	Inground, Wall, Ceiling
Dimension (mm)	45 x 45
Housing	Stainless body, Stainless steel screws, Silicone seal gaskets
Diffuser	Clear tempered glass
Reflector	-
Optic	-
IP rating	67
Finish Color	-
Electrical Data	DC 24V
Control	ON / OFF or DMX
Certification	-

Drawing



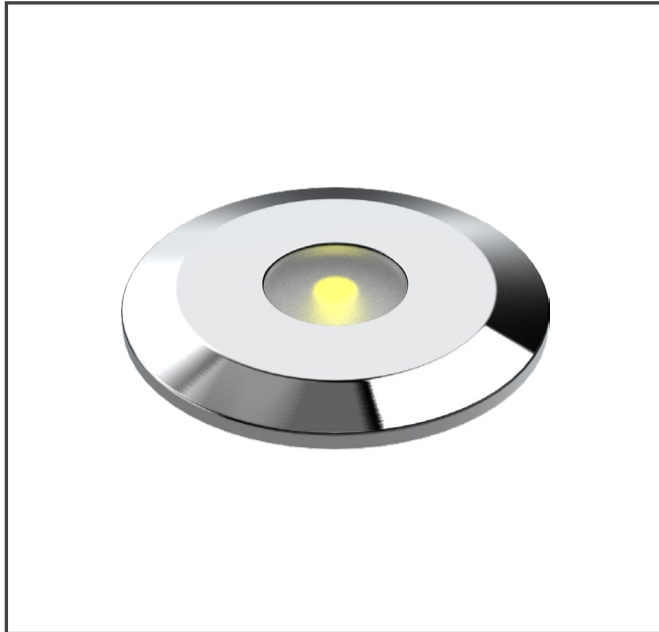
Photometric Data

Condition	-
-----------	---

Code

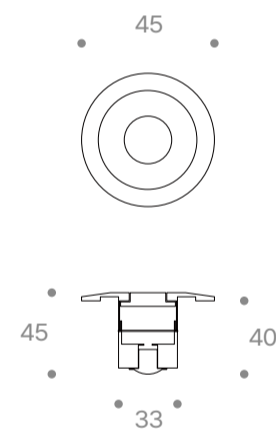
E0901-03S30Z000 / E0901-03S40Z000 / E0901-03S57Z000 / E0901-03SRZ000

Technical data



LED Source	SMD
Luminous Flux (lm)	81(3000K)
Power (W)	3
Luminous efficiency (lm/W)	27
Beam angle (°)	-
Color Temperature (K)	3000 / 4000 / 5700 / RGB
CRI	≥80
Installation	Inground, Wall, Ceiling
Dimension (mm)	45 x 45
Housing	Stainless body, Stainless steel screws, Silicone seal gaskets
Diffuser	Clear tempered glass
Reflector	-
Optic	-
IP rating	67
Finish Color	-
Electrical Data	DC 24V
Control	ON / OFF or DMX
Certification	-

Drawing



Photometric Data

Condition	-
-----------	---